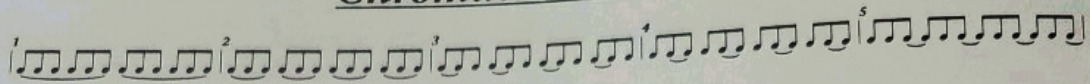


Chromatic Scales



A^b/B^b

A/B

B^b/C

B/D^b

C/D

D^b/E^b

D/E

Two staves of music for the D/E chord exercise. The top staff is in treble clef and the bottom staff is in bass clef. Both staves contain a sequence of eighth-note triplets, with the top staff starting on D4 and the bottom staff starting on E3. The key signature has one sharp (F#).

E/F

Two staves of music for the E/F chord exercise. The top staff is in treble clef and the bottom staff is in bass clef. Both staves contain a sequence of eighth-note triplets, with the top staff starting on E4 and the bottom staff starting on F3. The key signature has one sharp (F#).

E/F#

Two staves of music for the E/F# chord exercise. The top staff is in treble clef and the bottom staff is in bass clef. Both staves contain a sequence of eighth-note triplets, with the top staff starting on E4 and the bottom staff starting on F#3. The key signature has two sharps (F# and C#).

F/G

Two staves of music for the F/G chord exercise. The top staff is in treble clef and the bottom staff is in bass clef. Both staves contain a sequence of eighth-note triplets, with the top staff starting on F4 and the bottom staff starting on G3. The key signature has two sharps (F# and C#).

G/Ab

Two staves of music for the G/Ab chord exercise. The top staff is in treble clef and the bottom staff is in bass clef. Both staves contain a sequence of eighth-note triplets, with the top staff starting on G4 and the bottom staff starting on Ab3. The key signature has two sharps (F# and C#).

G/A

Two staves of music for the G/A chord exercise. The top staff is in treble clef and the bottom staff is in bass clef. Both staves contain a sequence of eighth-note triplets, with the top staff starting on G4 and the bottom staff starting on A3. The key signature has two sharps (F# and C#).

For Saxophones Only

Two staves of music for the Saxophones Only exercise. The top staff is in treble clef and the bottom staff is in bass clef. Both staves contain a sequence of eighth-note triplets, with the top staff starting on G4 and the bottom staff starting on A3. The key signature has two sharps (F# and C#).