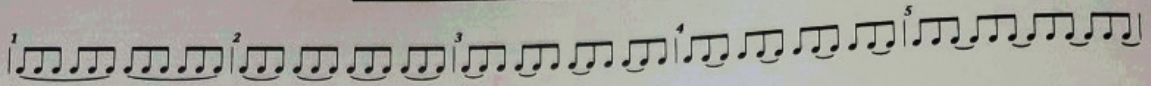
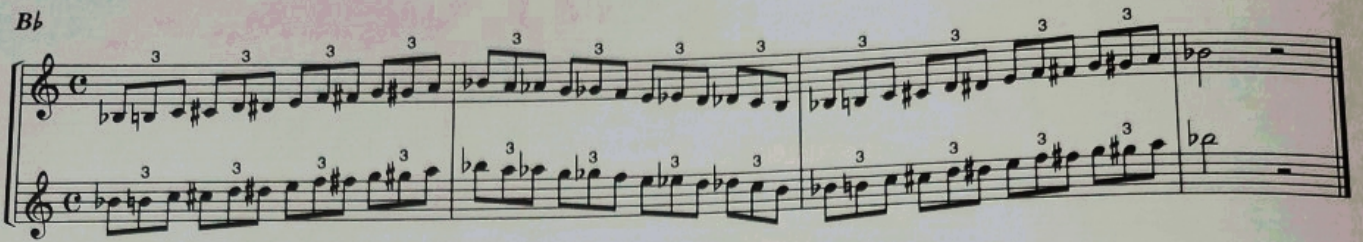


Chromatic Scales



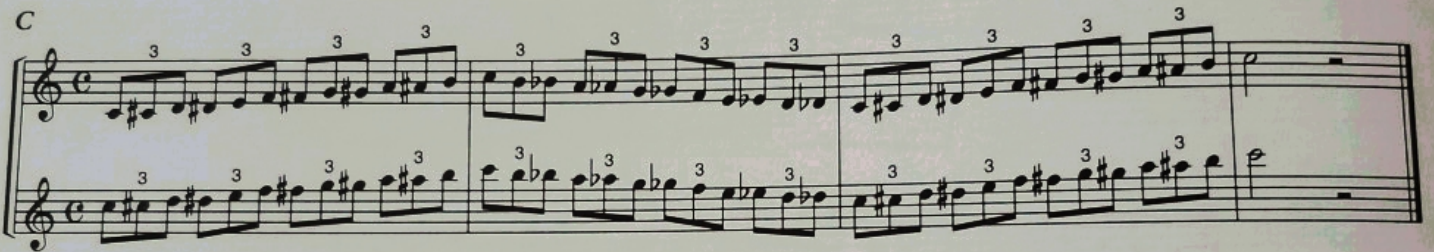
Bb



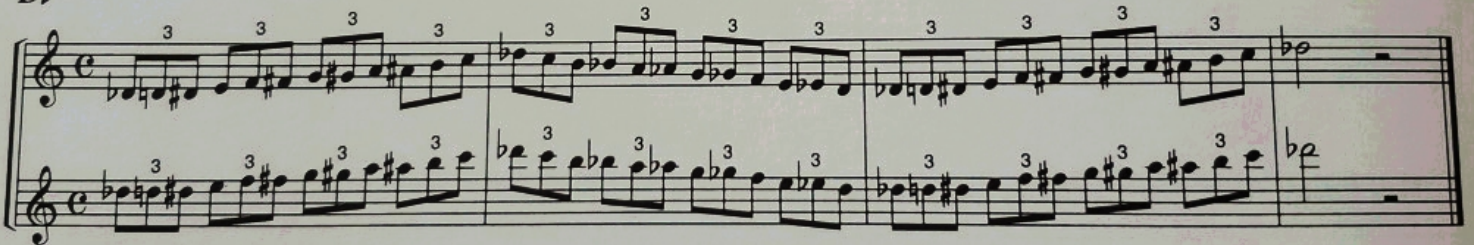
B



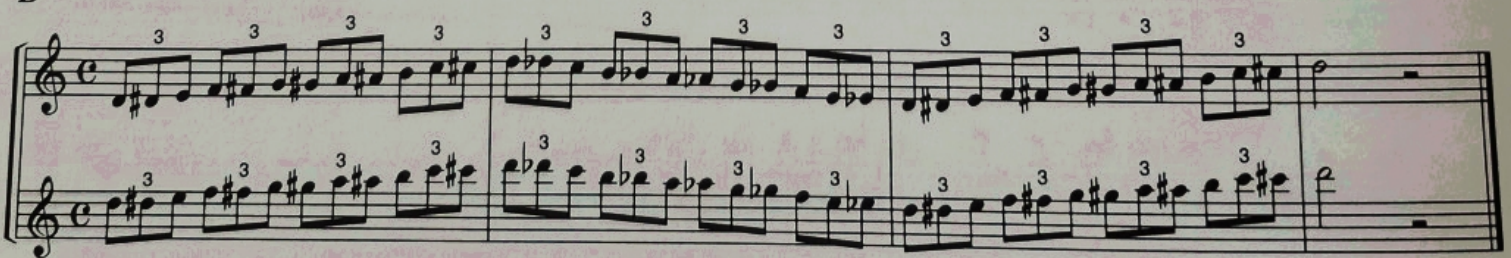
C



Db



D



Eb



E

Musical notation for E major, consisting of two staves. The top staff is in treble clef and the bottom staff is in bass clef. Both staves feature a melodic line of eighth notes with triplets indicated by a '3' above the notes. The key signature has one sharp (F#).

F

Musical notation for F major, consisting of two staves. The top staff is in treble clef and the bottom staff is in bass clef. Both staves feature a melodic line of eighth notes with triplets indicated by a '3' above the notes. The key signature has two sharps (F# and C#).

F#

Musical notation for F# major, consisting of a single staff in treble clef. The staff features a melodic line of eighth notes with triplets indicated by a '3' above the notes. The key signature has two sharps (F# and C#).

G

Musical notation for G major, consisting of a single staff in treble clef. The staff features a melodic line of eighth notes with triplets indicated by a '3' above the notes. The key signature has two sharps (F# and C#).

A^b

Musical notation for A-flat major, consisting of a single staff in treble clef. The staff features a melodic line of eighth notes with triplets indicated by a '3' above the notes. The key signature has two flats (Bb and Eb).

A

Musical notation for A major, consisting of a single staff in treble clef. The staff features a melodic line of eighth notes with triplets indicated by a '3' above the notes. The key signature has three sharps (F#, C#, and G#).

For Oboes Only

Musical notation for Oboes Only, consisting of two staves in treble clef. Both staves feature a melodic line of eighth notes with triplets indicated by a '3' above the notes. The key signature has two sharps (F# and C#).