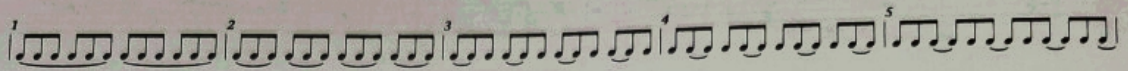


Chromatic Scales



D/E

Two staves of music for the D/E chromatic scale. The top staff is in treble clef and the bottom staff is in bass clef. Both staves contain a sequence of eighth notes with triplets indicated by a '3' above or below. The notes are: D4, E4, F4, G4, A4, B4, C5, B4, A4, G4, F4, E4, D4. The piece concludes with a whole note D4 in the top staff.

(also practice 8va)

E♭/F

Two staves of music for the E♭/F chromatic scale. The top staff is in treble clef and the bottom staff is in bass clef. Both staves contain a sequence of eighth notes with triplets indicated by a '3' above or below. The notes are: E♭4, F4, G4, A4, B4, C5, B4, A4, G4, F4, E♭4, D4. The piece concludes with a whole note E♭4 in the top staff.

(also practice 8va)

E/F♯

Two staves of music for the E/F♯ chromatic scale. The top staff is in treble clef and the bottom staff is in bass clef. Both staves contain a sequence of eighth notes with triplets indicated by a '3' above or below. The notes are: E4, F♯4, G4, A4, B4, C5, B4, A4, G4, F♯4, E4, D4. The piece concludes with a whole note E4 in the top staff.

(also practice 8va)

F/G

Two staves of music for the F/G chromatic scale. The top staff is in treble clef and the bottom staff is in bass clef. Both staves contain a sequence of eighth notes with triplets indicated by a '3' above or below. The notes are: F4, G4, A4, B4, C5, B4, A4, G4, F4, E4, D4, C4. The piece concludes with a whole note F4 in the top staff.

(also practice 8va)

G♭/A♭

Two staves of music for the G♭/A♭ chromatic scale. The top staff is in treble clef and the bottom staff is in bass clef. Both staves contain a sequence of eighth notes with triplets indicated by a '3' above or below. The notes are: G♭4, A♭4, B♭4, C5, B♭4, A♭4, G♭4, F4, E4, D4, C4. The piece concludes with a whole note G♭4 in the top staff.

G/A

Two staves of music for the G/A chromatic scale. The top staff is in treble clef and the bottom staff is in bass clef. Both staves contain a sequence of eighth notes with triplets indicated by a '3' above or below. The notes are: G4, A4, B4, C5, B4, A4, G4, F4, E4, D4, C4. The piece concludes with a whole note G4 in the top staff.

A^b/B^b

This system contains two staves of music. The upper staff is in treble clef and the lower in bass clef. Both are in common time (C). The key signature has two flats (B-flat and E-flat). The music consists of continuous eighth-note triplets in both hands, with a '3' above each triplet. The piece concludes with a whole rest in the upper staff and a bass clef in the lower staff.

A/B

This system contains two staves of music. The upper staff is in treble clef and the lower in bass clef. Both are in common time (C). The key signature has one flat (B-flat). The music consists of continuous eighth-note triplets in both hands, with a '3' above each triplet. The piece concludes with a whole rest in the upper staff and a bass clef in the lower staff.

B^b/C

This system contains two staves of music. The upper staff is in treble clef and the lower in bass clef. Both are in common time (C). The key signature has one flat (B-flat). The music consists of continuous eighth-note triplets in both hands, with a '3' above each triplet. The piece concludes with a whole rest in the upper staff and a bass clef in the lower staff.

B/D^b

This system contains two staves of music. The upper staff is in treble clef and the lower in bass clef. Both are in common time (C). The key signature has one flat (B-flat). The music consists of continuous eighth-note triplets in both hands, with a '3' above each triplet. The piece concludes with a whole rest in the upper staff and a bass clef in the lower staff.

C/D

This system contains two staves of music. The upper staff is in treble clef and the lower in bass clef. Both are in common time (C). The key signature has no sharps or flats. The music consists of continuous eighth-note triplets in both hands, with a '3' above each triplet. The piece concludes with a whole rest in the upper staff and a bass clef in the lower staff.

D^b/E^b

This system contains two staves of music. The upper staff is in treble clef and the lower in bass clef. Both are in common time (C). The key signature has two flats (B-flat and E-flat). The music consists of continuous eighth-note triplets in both hands, with a '3' above each triplet. The piece concludes with a whole rest in the upper staff and a bass clef in the lower staff.