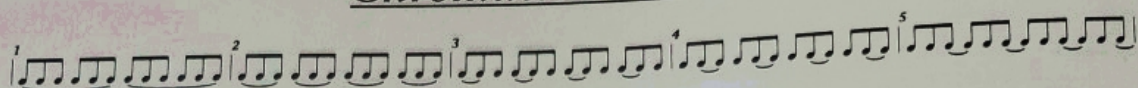


Chromatic Scales

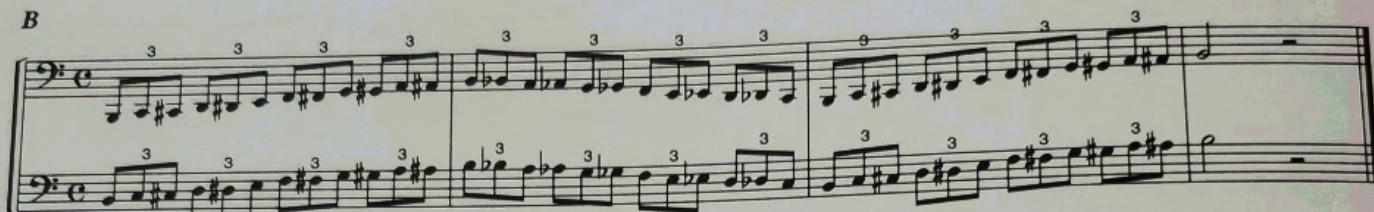


B \flat



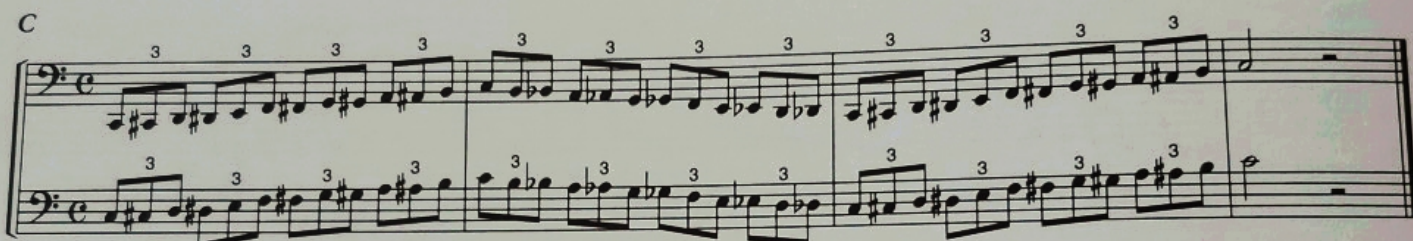
(also practice 8va)

B



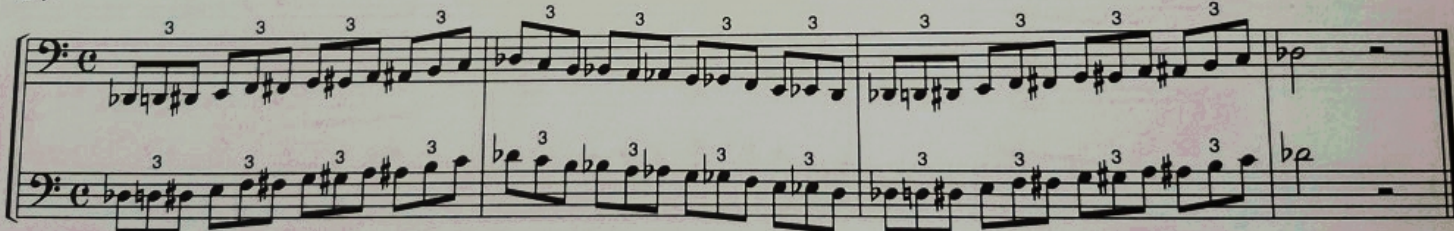
(also practice 8va)

C

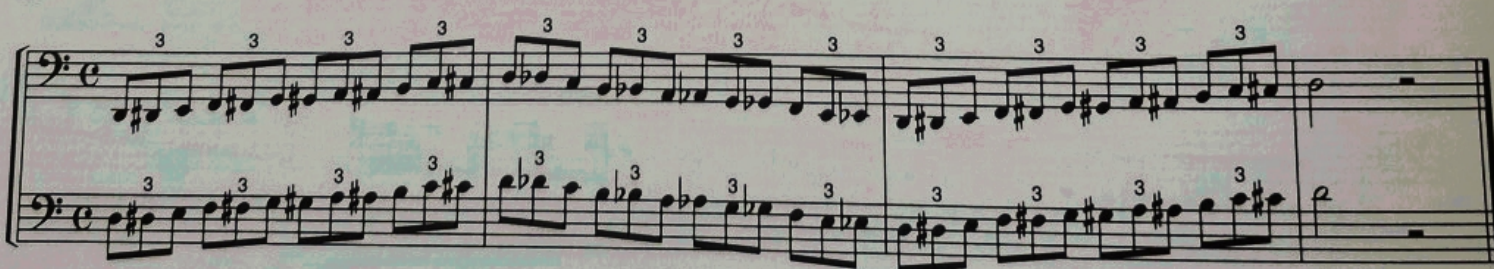


(also practice 8va)

D \flat



D



E \flat



F

Two staves of music in F major. The treble staff contains a sequence of eighth notes with triplets indicated by a '3' above the notes. The bass staff contains a sequence of eighth notes with triplets indicated by a '3' below the notes. The key signature has one sharp (F#).

F

Two staves of music in F major, continuing from the previous system. The treble staff contains a sequence of eighth notes with triplets indicated by a '3' above the notes. The bass staff contains a sequence of eighth notes with triplets indicated by a '3' below the notes. The key signature has one sharp (F#).

Gb

Two staves of music in Gb major. The treble staff contains a sequence of eighth notes with triplets indicated by a '3' above the notes. The bass staff contains a sequence of eighth notes with triplets indicated by a '3' below the notes. The key signature has two flats (Bb, Eb).

G

Two staves of music in G major. The treble staff contains a sequence of eighth notes with triplets indicated by a '3' above the notes. The bass staff contains a sequence of eighth notes with triplets indicated by a '3' below the notes. The key signature has two sharps (F#, C#).

Ab

Two staves of music in Ab major. The treble staff contains a sequence of eighth notes with triplets indicated by a '3' above the notes. The bass staff contains a sequence of eighth notes with triplets indicated by a '3' below the notes. The key signature has three flats (Bb, Eb, Ab).

A

Two staves of music in A major. The treble staff contains a sequence of eighth notes with triplets indicated by a '3' above the notes. The bass staff contains a sequence of eighth notes with triplets indicated by a '3' below the notes. The key signature has no sharps or flats.