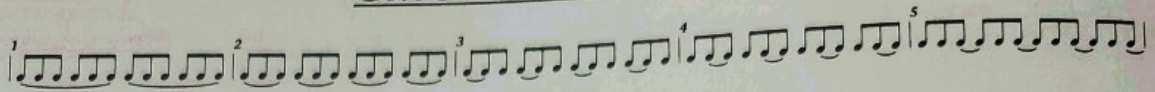


Chromatic Scales



D^b/B^b

D/B

E^b/C

E/D^b

F/D

G^b/E^b

G/E

Two staves of musical notation for the G/E chord exercise. The top staff is in treble clef and the bottom staff is in bass clef. The music consists of a sequence of eighth notes, with groups of three notes beamed together and marked with a '3' above them. The notes in the top staff are G4, A4, B4, C5, B4, A4, G4, F4, E4, D4, C4, B3, A3, G3, F3, E3, D3, C3, B2, A2, G2, F2, E2, D2, C2, B1, A1, G1. The notes in the bottom staff are E3, F3, G3, A3, B3, C4, D4, E4, F4, G4, A4, B4, C5, B4, A4, G4, F4, E4, D4, C4, B3, A3, G3, F3, E3, D3, C3, B2, A2, G2, F2, E2, D2, C2, B1, A1, G1.

A \flat /F

Two staves of musical notation for the A \flat /F chord exercise. The top staff is in treble clef and the bottom staff is in bass clef. The music consists of a sequence of eighth notes, with groups of three notes beamed together and marked with a '3' above them. The notes in the top staff are A \flat 4, B \flat 4, C5, B \flat 4, A \flat 4, G \flat 4, F4, E4, D4, C4, B3, A3, G3, F3, E3, D3, C3, B2, A2, G2, F2, E2, D2, C2, B1, A1, G1. The notes in the bottom staff are F3, G3, A3, B3, C4, D4, E4, F4, G4, A4, B4, C5, B4, A4, G4, F4, E4, D4, C4, B3, A3, G3, F3, E3, D3, C3, B2, A2, G2, F2, E2, D2, C2, B1, A1, G1.

A/F \sharp

Two staves of musical notation for the A/F \sharp chord exercise. The top staff is in treble clef and the bottom staff is in bass clef. The music consists of a sequence of eighth notes, with groups of three notes beamed together and marked with a '3' above them. The notes in the top staff are A4, B4, C5, B4, A4, G \sharp 4, F \sharp 4, E4, D4, C4, B3, A3, G3, F3, E3, D3, C3, B2, A2, G2, F2, E2, D2, C2, B1, A1, G1. The notes in the bottom staff are F \sharp 3, G \sharp 3, A3, B3, C4, D4, E4, F4, G4, A4, B4, C5, B4, A4, G4, F4, E4, D4, C4, B3, A3, G3, F3, E3, D3, C3, B2, A2, G2, F2, E2, D2, C2, B1, A1, G1.

B \flat /G

Two staves of musical notation for the B \flat /G chord exercise. The top staff is in treble clef and the bottom staff is in bass clef. The music consists of a sequence of eighth notes, with groups of three notes beamed together and marked with a '3' above them. The notes in the top staff are B \flat 4, C5, D5, C5, B \flat 4, A4, G4, F4, E4, D4, C4, B3, A3, G3, F3, E3, D3, C3, B2, A2, G2, F2, E2, D2, C2, B1, A1, G1. The notes in the bottom staff are G3, A3, B3, C4, D4, E4, F4, G4, A4, B4, C5, B4, A4, G4, F4, E4, D4, C4, B3, A3, G3, F3, E3, D3, C3, B2, A2, G2, F2, E2, D2, C2, B1, A1, G1.

B/A \flat

Two staves of musical notation for the B/A \flat chord exercise. The top staff is in treble clef and the bottom staff is in bass clef. The music consists of a sequence of eighth notes, with groups of three notes beamed together and marked with a '3' above them. The notes in the top staff are B4, C5, D5, C5, B4, A4, G4, F4, E4, D4, C4, B3, A3, G3, F3, E3, D3, C3, B2, A2, G2, F2, E2, D2, C2, B1, A1, G1. The notes in the bottom staff are A \flat 3, B3, C4, D4, E4, F4, G4, A4, B4, C5, B4, A4, G4, F4, E4, D4, C4, B3, A3, G3, F3, E3, D3, C3, B2, A2, G2, F2, E2, D2, C2, B1, A1, G1.

C/A

Two staves of musical notation for the C/A chord exercise. The top staff is in treble clef and the bottom staff is in bass clef. The music consists of a sequence of eighth notes, with groups of three notes beamed together and marked with a '3' above them. The notes in the top staff are C5, D5, E5, D5, C5, B4, A4, G4, F4, E4, D4, C4, B3, A3, G3, F3, E3, D3, C3, B2, A2, G2, F2, E2, D2, C2, B1, A1, G1. The notes in the bottom staff are A3, B3, C4, D4, E4, F4, G4, A4, B4, C5, B4, A4, G4, F4, E4, D4, C4, B3, A3, G3, F3, E3, D3, C3, B2, A2, G2, F2, E2, D2, C2, B1, A1, G1.

For Saxophones Only

Two staves of musical notation for saxophones only. The top staff is in treble clef and the bottom staff is in bass clef. The music consists of a sequence of eighth notes, with groups of three notes beamed together and marked with a '3' above them. The notes in the top staff are C5, D5, E5, D5, C5, B4, A4, G4, F4, E4, D4, C4, B3, A3, G3, F3, E3, D3, C3, B2, A2, G2, F2, E2, D2, C2, B1, A1, G1. The notes in the bottom staff are A3, B3, C4, D4, E4, F4, G4, A4, B4, C5, B4, A4, G4, F4, E4, D4, C4, B3, A3, G3, F3, E3, D3, C3, B2, A2, G2, F2, E2, D2, C2, B1, A1, G1.